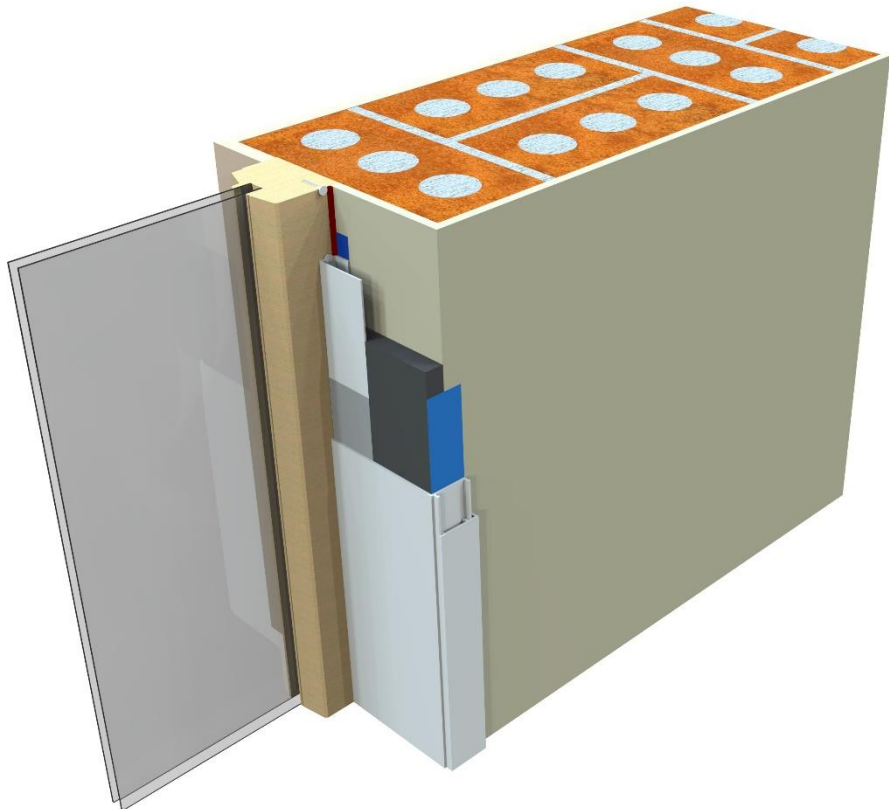


enviroform

DIY THERMAL REVEAL KIT

INSTALLATION GUIDE



- Easy & Quick to Installation
- Four Component Parts
- R-value 0.80m²K/W
- Reduces heat losses through reveals.
- Reduces risk of mould growth
- Finished hygienic Surface
- No Wet Trades
- No Redecorating
- One Trade application

TELEPHONE

+44 (0)28 4177 3314

EMAIL

info@enviroformsolutions.com



ADDRESS

16 Milltown Industrial Estate
Upper Dromore Road
Warrenpoint
Co Down
BT34 3PN

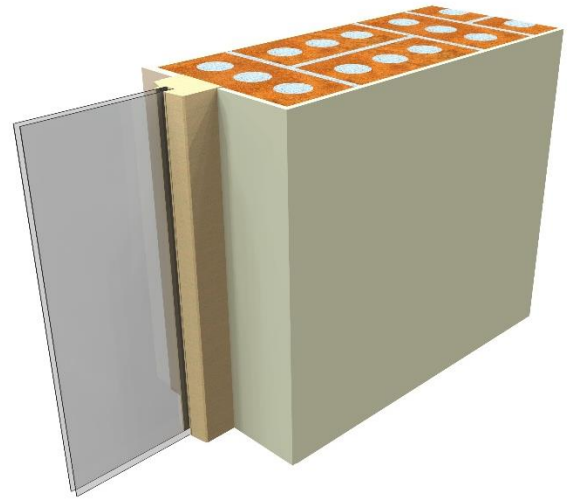
DIY Thermal Reveal Kit INSTALLATION GUIDE



Step 1: Clean and remove any mould with a suitable anti-microbial agent.



Mould on Reveal (fig1.0)



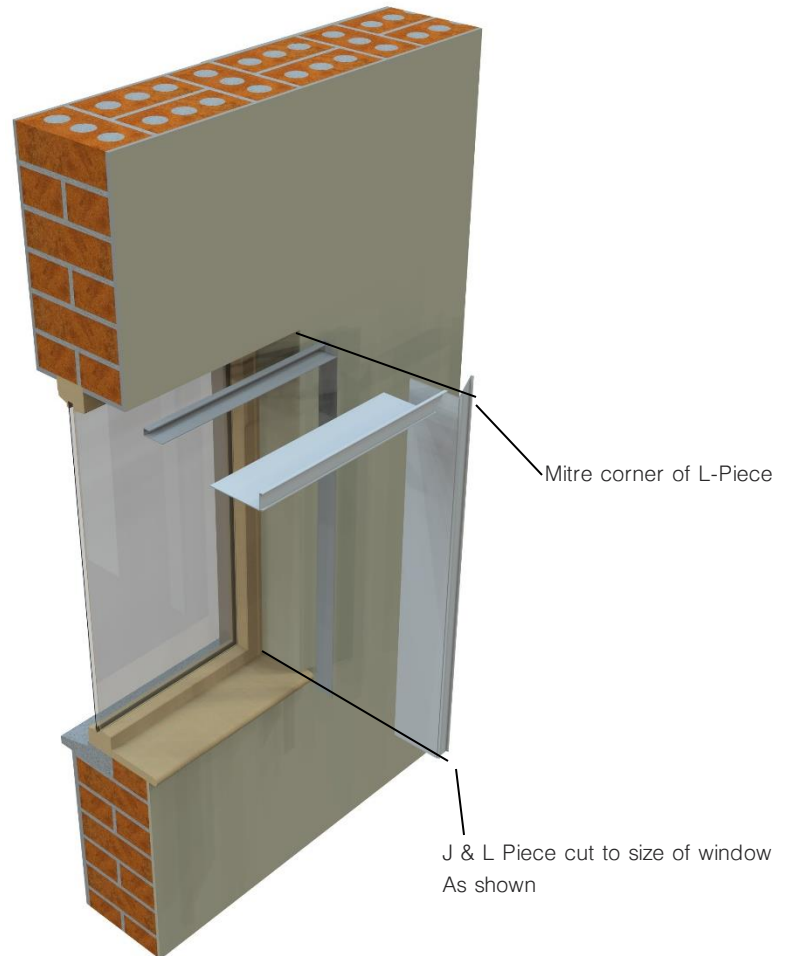
Reveal cleaned and treated (fig1.1)

Step 2: Measure the lengths and depths of reveals to be insulated.



Measure reveal (fig1.2)

Step 3: Cut J trims & L pieces to suit the window and the aerogel insulation to suit the depth of the reveal.

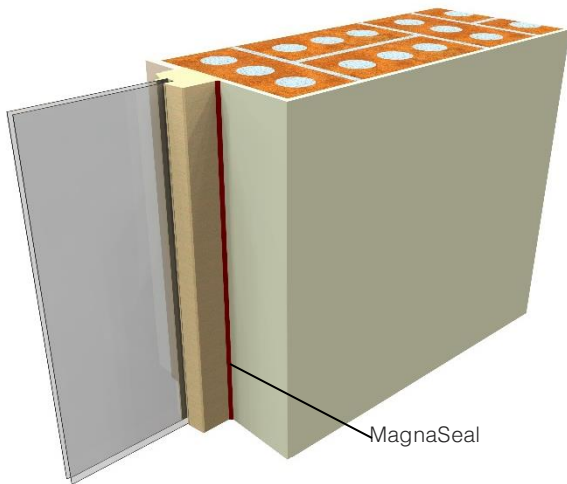


Cutting of J&L Piece (fig1.3)

DIY Thermal Reveal Kit INSTALLATION GUIDE

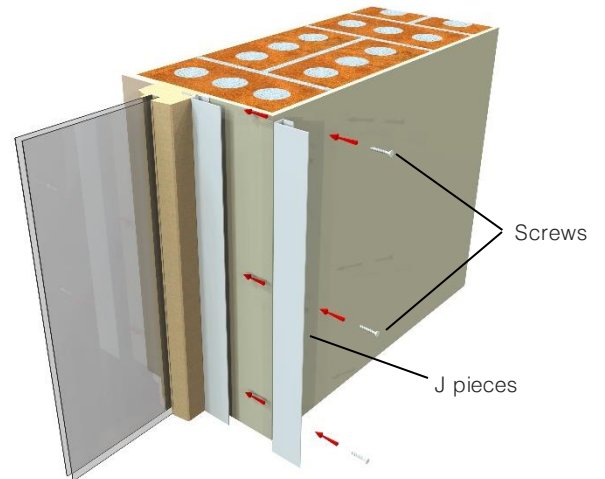


Step 4: Using MagnaSeal provided seal around the edge of the windows to be insulated.



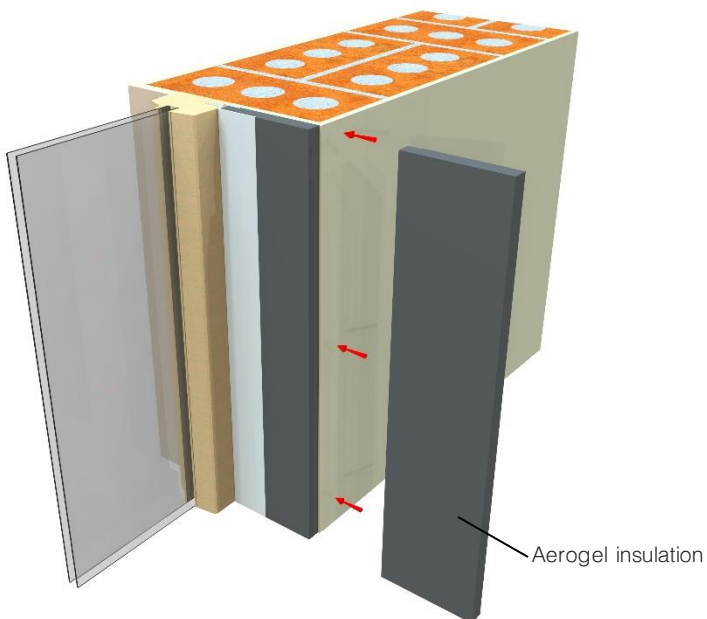
Applying Magnaseal (fig1.4)

Step 5: Screw the already cut J pieces into the frame with the screws provided embedding them into the MagnaSeal.



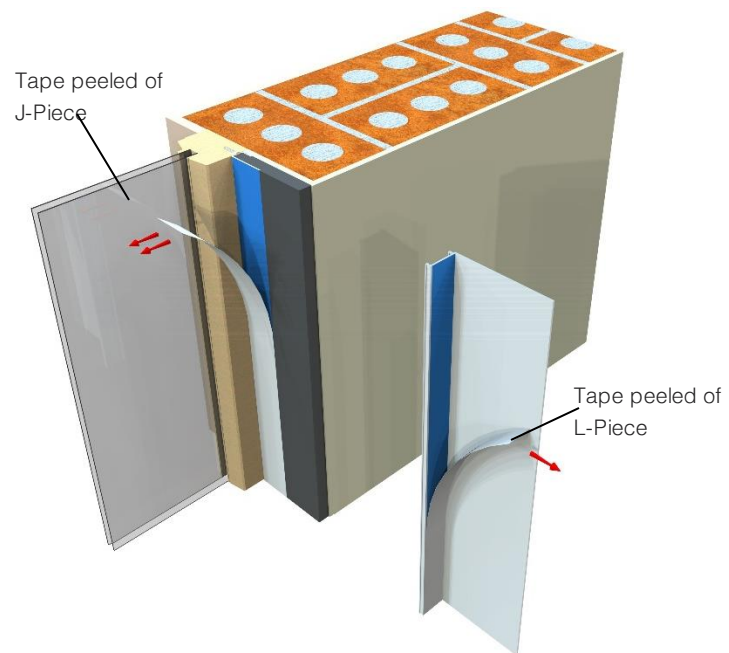
Fixing J Piece (fig1.5)

Step 6: Slot the cut piece of Aerogel between the edges of the J piece.



Inserting Insulation (fig1.6)

Step 7: Peel back tape on J piece and the L piece.

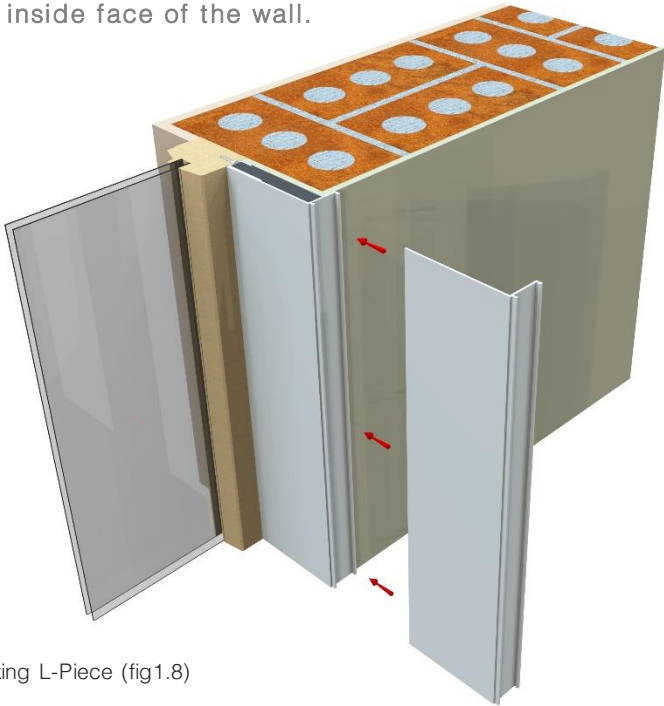


Removing Tape (fig1.7)

DIY Thermal Reveal Kit INSTALLATION GUIDE



Step 8: Add in the L piece making sure the long leg is attached to the J piece and the short leg top the inside face of the wall.



Fixing L-Piece (fig1.8)

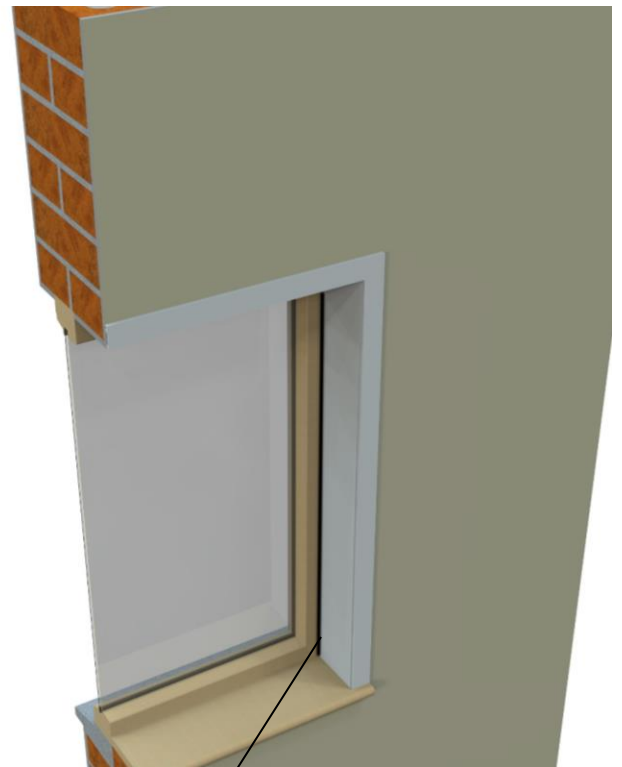
Step 9: Cut and mitre the face strips to suit and click into place.



Fixing Facestrip (fig1.10)



L-Piece in place(fig1.9)

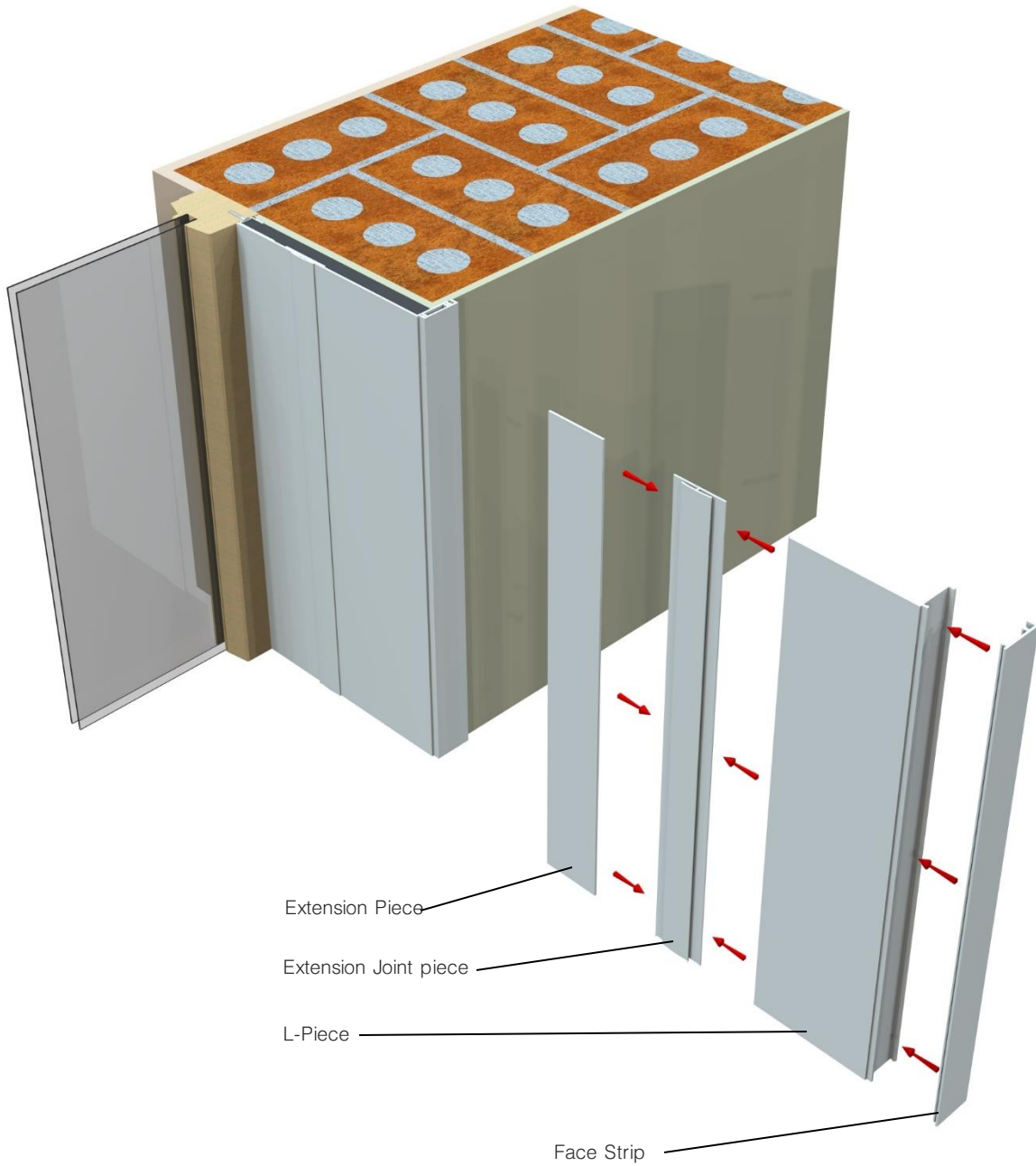


Apply Magnaseal to finish (fig1.11)

DIY Thermal Reveal Kit INSTALLATION GUIDE

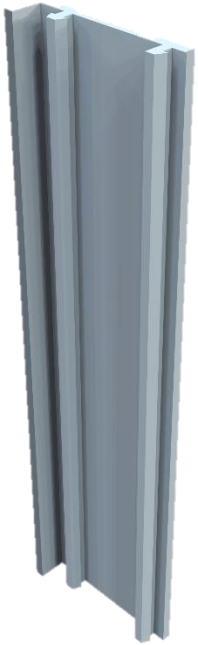


Step 10: Reveals deeper than 110mm

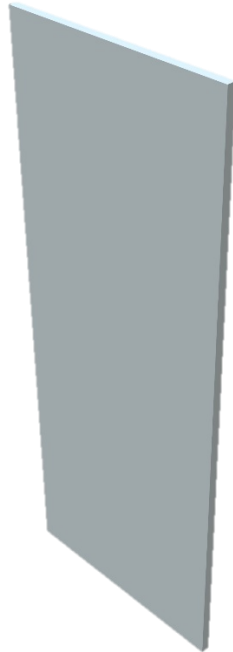


Reveals deeper than 110mm (fig1.12)

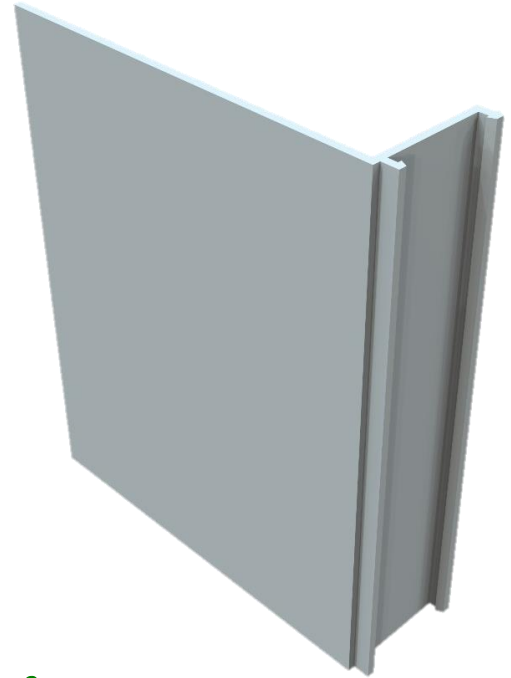
COMPONENTS LIST



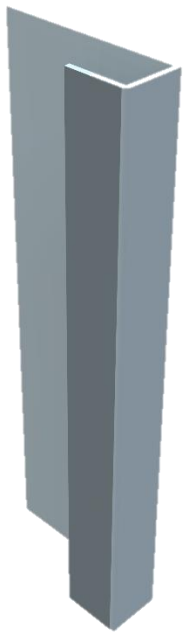
1: Face Strip



2: Extension Piece



3: L-Piece



4: J-Piece



5: Aerogel Insulation



6: Extension Joint Piece

TELEPHONE

+44 (0)28 4177 3314

EMAIL

info@enviroformsolutions.com



ADDRESS

16 Milltown Industrial Estate
Upper Dromore Road
Warrenpoint
Co Down
BT34 3PN